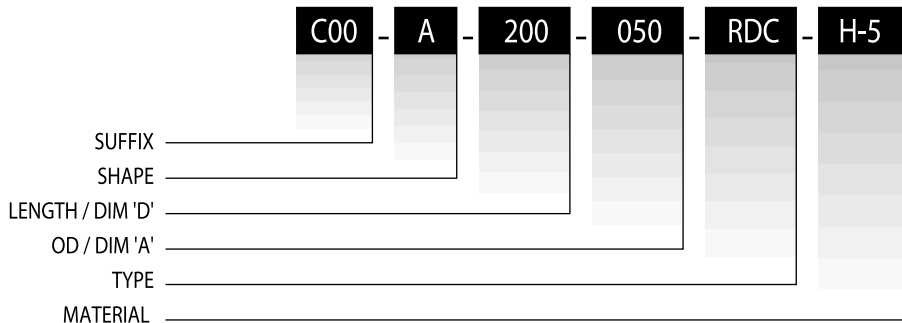


RODS

Main Application
Fixed inductors, chokes, filters



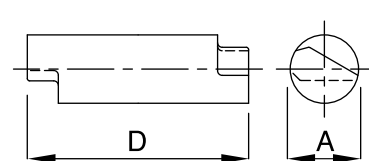
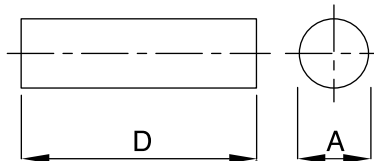
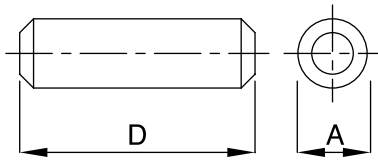
Ordering code :



Shape A

Shape B

Shape D



No ozone depleting chemicals used in the manufacture of these products.

Products are RoHS & WEEE Directive compliant.

DIMENSIONS (UNIT - mm)

PRODUCT CODE	A	D*	θ	SHAPE
RDC - 016 - BC	1.60 ± 0.10	7.00 - 16.00		B
RDC - 018 - AF	1.80 ± _{0.05} ⁰	7.00 - 18.00		A
RDC - 020 - AC	2.00 ± 0.10	7.00 - 18.00		A
RDC - 024 - AC	2.40 ± _{0.20} ⁰	7.00 - 20.00		A
RDC - 025 - BF	2.50 ± _{0.05} ⁰	7.00 - 20.00		B
RDC - 030 - AC	3.00 ± 0.15	7.00 - 28.00		A
RDC - 035 - AC	3.50 ± 0.15	7.00 - 28.00		A
RDC - 040 - AC	4.00 ± 0.15	7.00 - 30.00		A
RDC - 046 - AC	4.60 ± _{0.25} ⁰	7.00 - 30.00		A
RDC - 050 - AC	5.00 ± 0.20	7.00 - 30.00		A
RDC - 052 - DF	5.25 ± _{0.05} ⁰	15.00 - 25.00	20° REF	D
RDC - 060 - AC	6.00 ± _{0.30} ⁰	7.00 - 38.00		A
RDC - 065 - AC	6.50 ± _{0.30} ⁰	7.00 - 38.00		A
RDC - 080 - AC	8.00 ± 0.20	7.00 - 38.00		A
RDC - 095 - AC	9.50 ± 0.20	7.00 - 38.00		A
RDC - 100 - AC	10.00 ± 0.20	7.00 - 40.00		A
RDC - 012 - AC	12.00 ± 0.20	7.00 - 40.00		A

* Tolerance for length ± 2% or 0.25mm whichever is greater.