

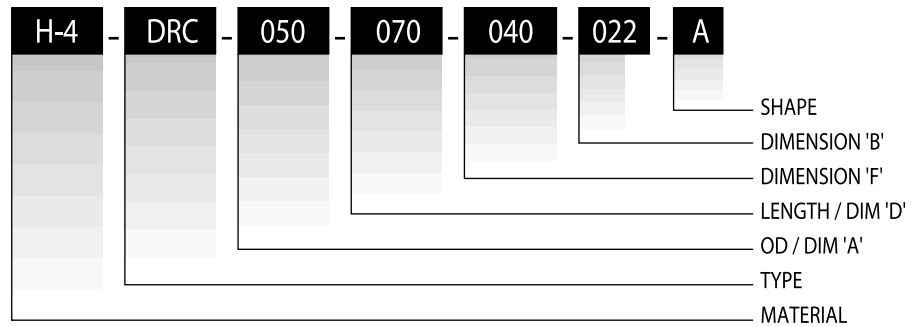


DRUMS

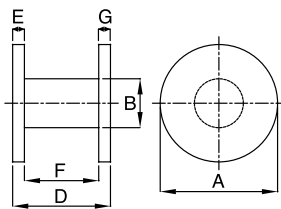
Main Application
Choke coils



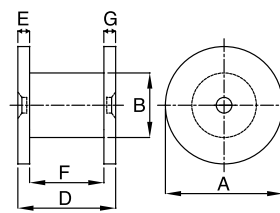
Ordering code :



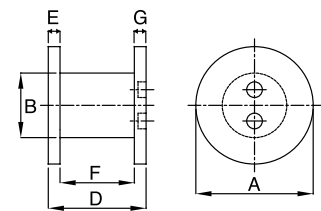
Shape A



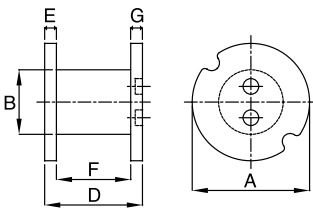
Shape D



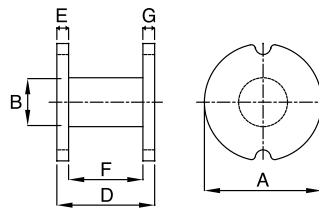
Shape F



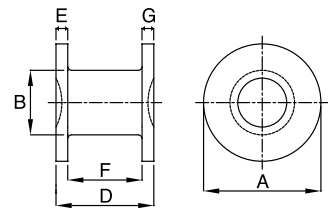
Shape G



Shape I



Shape J



No ozone depleting chemicals used in the manufacture of these products.

Products are RoHS & WEEE Directive compliant.

DIMENSIONS (UNIT - mm)

PRODUCT CODE	A	B	D	E	F	G	SHAPE
DRC - 025 - 025 - 013 - 011 J	2.50 ± 0.10	1.10 ± 0.07	2.50 ± 0.10	0.58 REF	1.34 ± 0.07	0.58 REF	J
DRC - 035 - 045 - 030 - 019 D	3.50 ± 0.15	1.90 ± 0.10	4.50 ± 0.20	0.75 REF	3.00 ± 0.15	0.75 REF	D
DRC - 040 - 030 - 012 - 017 J	4.00 ± 0.10	1.70 ± 0.10	3.00 ± 0.15	0.90 REF	1.20 ± 0.10	0.90 REF	J
DRC - 040 - 045 - 023 - 020 A	4.00 ± 0.20	2.00 ± 0.15	4.50 ± 0.20	1.10 REF	2.30 ± 0.15	1.10 REF	A
DRC - 050 - 070 - 040 - 022 A	5.00 ± 0.20	2.20 ± 0.15	7.00 ± 0.30	1.50 REF	4.00 ± 0.25	1.50 REF	A
DRC - 050 - 080 - 042 - 025 D	5.00 ± 0.20	2.50 ± 0.15	8.00 ± 0.30	1.90 REF	4.20 ± 0.20	1.90 REF	D
DRC - 060 - 080 - 030 - 030 D	6.00 ± 0.20	3.00 ± 0.20	8.00 ± 0.30	2.50 REF	3.00 ± 0.20	2.50 REF	D
DRC - 060 - 080 - 042 - 025 F	6.00 ± 0.20	2.50 ± 0.20	8.00 ± 0.30	1.90 REF	4.20 ± 0.20	1.90 REF	F
DRC - 060 - 080 - 044 - 025 I	6.00 ± 0.15	2.50 ± 0.15	8.00 ± 0.25	1.80 REF	4.40 ± 0.15	1.80 REF	I
DRC - 065 - 096 - 048 - 030 G	6.50 ± 0.20	3.00 ± 0.15	9.60 ± 0.30	2.40 REF	4.80 ± 0.20	2.40 REF	G
DRC - 075 - 090 - 028 - 030 D	7.50 ± 0.20	3.00 ± 0.20	9.00 ± 0.30	3.10 REF	2.80 ± 0.10	3.10 REF	D
DRC - 075 - 090 - 050 - 032 G	7.50 ± 0.20	3.20 ± 0.20	9.00 ± 0.30	2.00 REF	5.00 ± 0.20	2.00 REF	G
DRC - 080 - 100 - 050 - 030 F	8.00 ± 0.20	3.00 ± 0.20	10.00 ± 0.40	2.50 REF	5.00 ± 0.20	2.50 REF	F
DRC - 080 - 100 - 060 - 040 G	8.00 ± 0.20	4.00 ± 0.20	10.00 ± 0.30	2.00 REF	6.00 ± 0.20	2.00 REF	G
DRC - 100 - 160 - 100 - 060 D	10.00 ± 0.30	6.00 ± 0.20	16.00 ± 0.50	3.00 REF	10.00 ± 0.30	3.00 REF	D
DRC - 100 - 160 - 100 - 060 F	10.00 ± 0.30	6.00 ± 0.30	16.00 ± 0.40	3.00 REF	10.00 ± 0.30	3.00 REF	F